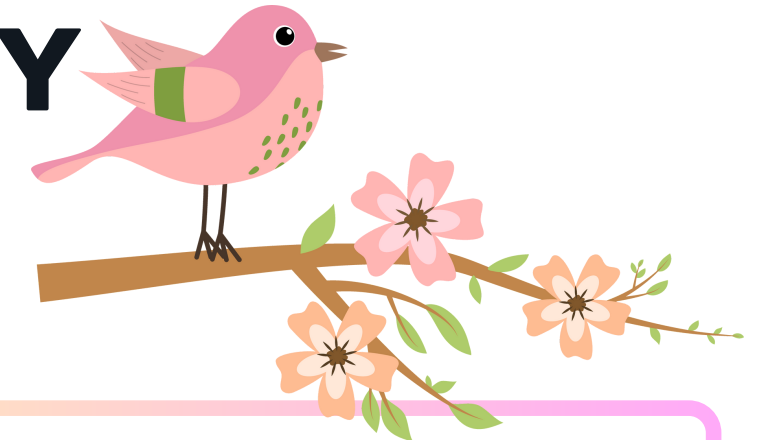




BALDWIN-WHITEHALL ELEMENTARY BREAKFAST MENU APRIL 2024



Milk Choices:
Fat-Free Unflavored
Low-Fat 1% Unflavored

Ala Carte Prices:

Ala Carte Milk: \$.50

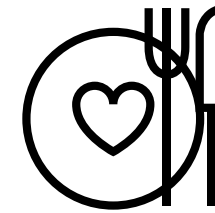
Fruit or Fruit juice: \$.75

Entree...\$1.00
All grains used are
Whole Grain products.

Breakfast Meal Includes:

- § Choice of Whole Grain Entree (Credits for 2 WG components)
- § Choice of 1 100% Fruit Juice
- § Choice of 1 Fruit
- § Choice of 1 Milk

Students must choose at least 3 meal components with 1 of the 3 being either Fruit or 100% Fruit Juice to qualify for a Free Meal. Individual items taken are charged ala carte prices.



Offer Versus Serve Option:
Students are offered
5-meal components.

*Students must select at least
3 components with 1 being
a fruit component
for a Free meal.*

**BREAKFAST MEAL PRICES
FREE TO ALL CHILDREN
ENROLLED**

**Students are permitted one
free breakfast per day.**



Meal Benefits Under National School Lunch Program -

If you feel you may qualify for meal benefits, please go to www.schoolcafe.com and complete a meal application online. Meal benefits are good for only one school year. If you have not reapplied for the new school year after July 1, 2023, please apply for meal benefits now. If you received a direct Certification letter from BWS District after July 1, 2023 stating that you qualify for the 2023-2024 school year, you do not have to complete a meal application.

Meal Charge Policy -

Parents are responsible for making payments to the school district for meals purchases. Please visit the district website at www.bwschools.net for more information. Here you will find the Board Policy 808.1 for your reference.

Menu is subject to change: Please follow us on Twitter for the most up-to-date menu changes occurring at your school.

Follow us on Twitter @BWFOODSERVICE

THIS INSTITUTION IS AN EQUAL OPPORTUNITY PROVIDER AND EMPLOYER

Menu is subject to change.

BALWIN WHITEHALL SCHOOL DISTRICT

APRIL 2024 ELEMENTARY BREAKFAST MENU

Breakfast Meal Includes:
 § Choice of Whole Grain Entree (Credits for 2 WG components)
 § Choice of 1 100% Fruit Juice
 § Choice of 1 Fruit
 § Choice of 1 Milk

Students must choose at least 3 meal components with 1 of the 3 being either Fruit or 100% Fruit Juice for a free meal.

School Year 2023-2024

	MON	TUE	WED	THU	FRI	
 April 1 - 5	NO SCHOOL	French Toast	Mini Donuts	Cherry Muffin	Confetti Vanilla Waffles	
April 8 - 12	Chocolate Bread Slice	Pancakes	Maple Waffle	Pumpkin Swirl Bread	NO SCHOOL	
April 15-19	Pizza Bagel	Goody Ring	Mini Pancakes	Dunkin Sticks	Mini Donut Holes	
April 22 - 26	Pancake & Turkey Sausage on a Stick	NO SCHOOL	Mini Chocolate Donuts	Banana Bread Slice	Pull-Apart Glazed Donut	
April 29 - 30	Maple Waffle	Chocolate Muffin	Elementary Breakfast - Menu Notes: <ul style="list-style-type: none"> • No Pork • No Nuts, Peanuts or Tree Nuts • No Seafood/Fish • Donuts/pastries are whole grains & are baked -not fried. • All Juice served are 100% fruit juice & credits as a 1/2 cup serving of fruit. 			